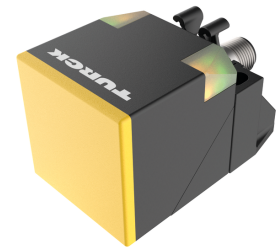
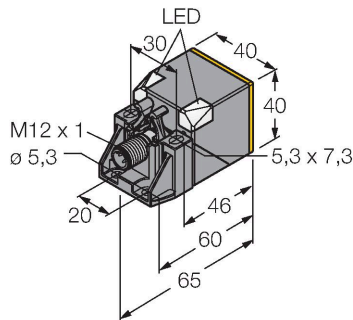


NI40UE-QV40-VN6X2-H1141

Inductive Sensor – With Extended Switching Distance



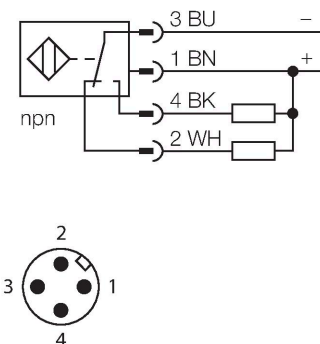
Technical data

| | |
|--|--|
| Type | NI40UE-QV40-VN6X2-H1141 |
| ID | 100032302 |
| General data | |
| Rated switching distance | 40 mm |
| Mounting conditions | Non-flush |
| Secured operating distance | $\leq (0.81 \times S_n)$ mm |
| Repeat accuracy | $\leq 2 \%$ of full scale |
| | $\leq \pm 20 \%, \leq -25 \text{ °C} \vee \geq +70 \text{ °C}$ |
| Hysteresis | 3...15 % |
| Electrical data | |
| Operating voltage U_B | 10...30 VDC |
| Ripple U_{ss} | $\leq 10 \%$ U_{Bmax} |
| DC rated operating current I_o | ≤ 200 mA |
| No-load current | ≤ 15 mA |
| Residual current | ≤ 0.1 mA |
| Isolation test voltage | 0.5 kV |
| Short-circuit protection | yes/Cyclic |
| Voltage drop at I_o | ≤ 1.8 V |
| Wire break/reverse polarity protection | yes/Complete |
| Output function | 4-wire, Complementary contact, NPN |
| DC field stability | 300 mT |
| AC field stability | 300 mT _{ss} |
| Switching frequency | 0.25 kHz |

Features

- Rectangular, height 40 mm
- Plastic, PBT-GF30-V0
- High luminance corner LEDs
- Optimum view on supply voltage and switching state from any position
- Factor 1 for all metals
- Increased switching distance
- Protection class IP68
- Resistant to magnetic fields
- DC 4-wire, 10...30 VDC
- Changeover contact, NPN output
- M12 x 1 male connector

Wiring diagram



Functional principle

Inductive sensors are designed for wear-free and contactless detection of metal objects. uprox+ sensors have significant advantages due to their patented multi-coil system. They excel thanks to their optimum switching

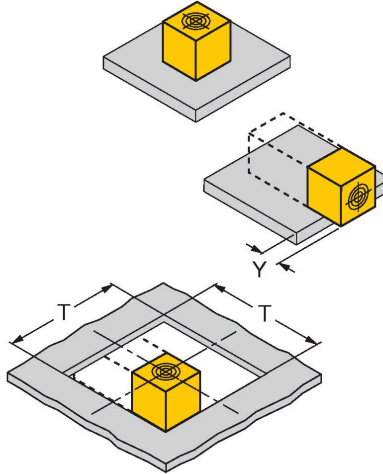
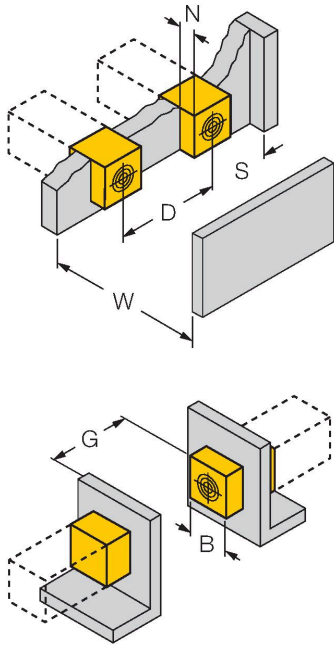
Technical data

distances, maximum flexibility and operational reliability as well as efficient standardization.

| Mechanical data | |
|--------------------------|---|
| Design | Rectangular, QV40 |
| Dimensions | 65 x 40 x 40 mm |
| | variable orientation of active face in 5 directions |
| Housing material | Plastic, PBT-GF30-V0, Black |
| Active area material | Plastic, PA6-GF30-X, yellow |
| Electrical connection | Connector, M12 × 1 |
| Environmental conditions | |
| Ambient temperature | -30...+85 °C |
| Vibration resistance | 55 Hz (1 mm) |
| Shock resistance | 30 g (11 ms) |
| Protection class | IP68 |
| MTTF | 874 years acc. to SN 29500 (Ed. 99) 40 °C |
| Power-on indication | 2 × LEDs, Green |
| Switching state | 2 × LEDs, Yellow |
| Included in delivery | Fixing clamp for QV40 |

Mounting instructions

Mounting instructions/Description



Distance D 240 mm

Distance W 120 mm

Distance T 100 mm

Distance S 60 mm

Distance G 240 mm

Distance N 40 mm

Width active area B 40 mm

Protruded mounting:

y = 20 mm: Sr = 40 mm

y = 30 mm: Sr = 40 mm

y = 40 mm: Sr = 40 mm

Mounting position in aperture plate: T = 100 mm:

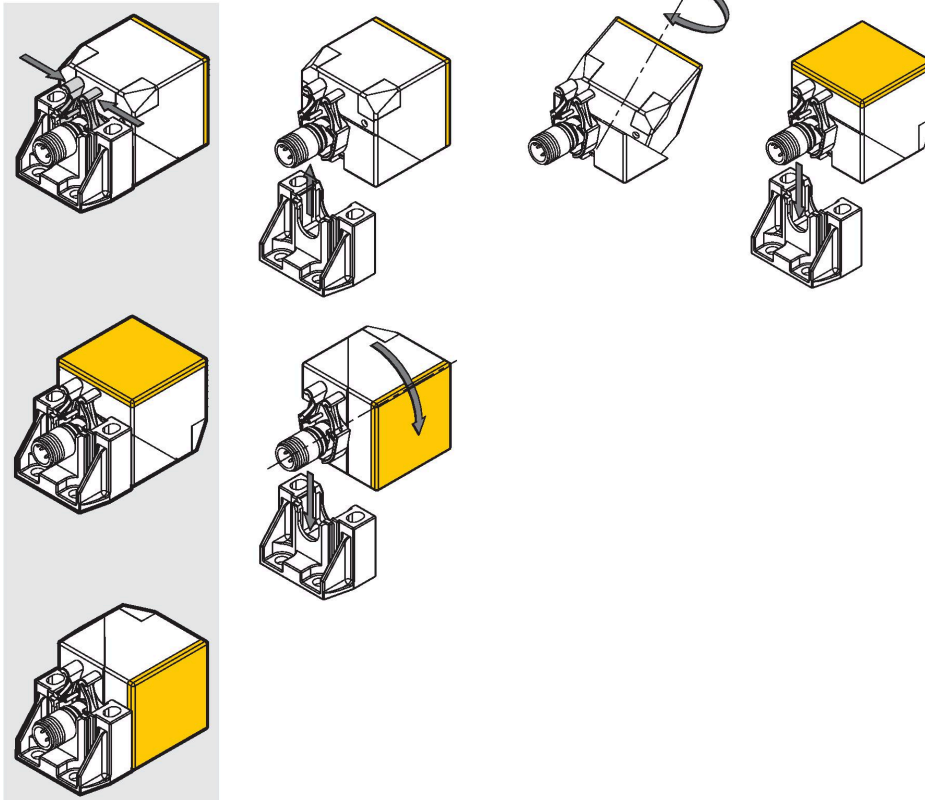
Twisted mounting position

On metal Sr = 40 mm

The active face of the sensor can be aligned in 5 directions without tools and using only one hand.

Squeeze the bracket to release the sensor from the mounting bracket. Now, align the sensor with the active face pointing in the desired direction.

Then, snap the sensor back into the bracket. The sensor is now securely locked in position.



Accessories

BSS-CP40

6901318

Mounting clamp for rectangular housings 40 x 40 mm; material: Polypropylene

